



October 2022

The MKCF is proud to connect donors with people working to enrich the community on Lana'i. It's a small community and we can all benefit by knowing who each other is and what our dreams, plans, and projects to enhance life on the island are. I hope this enews can further our connection. Please keep planning! The next request for funding deadline is February 10. Find the application at <https://www.manelekoele.org/>.

At the August meeting of the MKCF board considered a number of projects that align with our mission to create opportunities for Lāna'i residents by funding and mentoring community non-profit organizations in the areas of Education, Health Care, Senior Services, and the Arts.

Many organizations are working to improve the quality of life and economic viability for the community of the unique and beautiful island of Lana'i. This newsletter captures another three -- Hale Kupuna requested support to learn about the art and science of gardening and composting, the media literacy and filmmaking classes offered by Lāna'i Academy of Performing Arts (LAPA), and the power of good sports coaching to change the trajectory of teenage lives.

I'm proud of the breadth of projects we were able to fund and am always impressed by the dreams, plans, and projects afoot here. I'm grateful to everyone who has offered support for the work we do to improve the quality of life and future prospects for the people of Lana'i, from preschoolers to seniors. My hope is that more of you will join us. Gifts of all sizes are welcome and impactful. Please forward this email to someone who would be interested in news of the projects and life on the island.

Mahalo,

Sally Clemens

President of the Board

You can reach me and other members of the board by emailing mkcflana12016@gmail.com.

Board of Directors:

David Green, Treasurer

Ernie von Simson, Secretary

Directors: Victoria Larsen, Teddy McDermott, Erin Kelly, Kathy Knapp

Media Literacy Wins Big

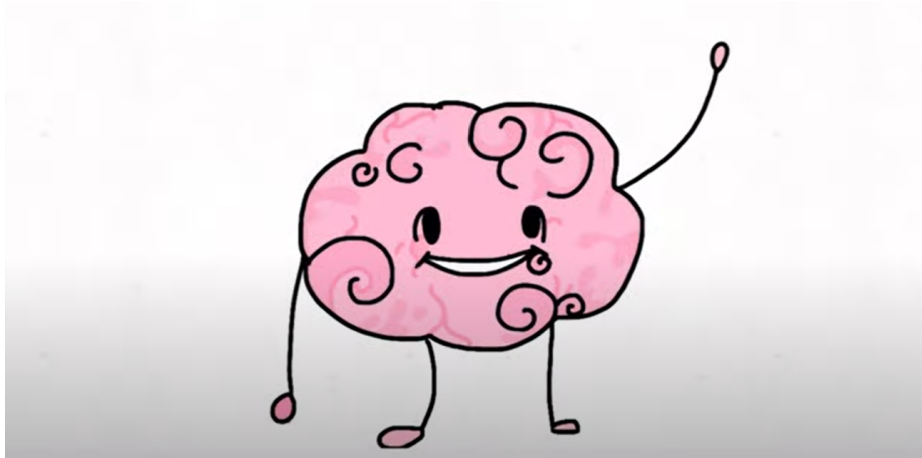
Lāna'i Academy of Performing Arts (LAPA) received \$9,266 from MKCF to purchase cameras, a computer, and lighting equipment to support training and education in video and filmmaking.

Knowledge in this area could contribute to other professional endeavors such as video journalism, and social media content production, especially as Maui County works to build a film industry. LAPA students are keen to learn these skills, shown by a surge in class enrollment.

Other projects are in the works, with students creating short films on a family member playing baseball for the Detroit Tigers, live production of 6-8 actors, and a silent film. You don't want to miss what's coming up!

“What joy it is and will be to see young adults being developed for the next generation of great performance and film production artists,” said LAPA Director Matt Glickstein.

<https://www.youtube.com/watch?v=1BV29aZVjPc&list=PLoPPM45XZ3odO7JZtmGHSOdH8ehY4eUVK&index=2>





Hala Kahiki Basketball Club created in 2018 by MaryLou Kaukeano, Christian Yumol, and Elmer Agtarap has been supported by MKCF since its beginning. After a Covid hiatus, the JV and varsity boys and girls teams got to play in the Las Vegas Classic this past summer. It was Christian's third time bringing teams to Las Vegas to compete against national players and he pushed the Lana'i teams to try their absolute best. The girls' team showed off their hard work and fought their way to 2d place in the West Coast National Championships and placed 3d in the Las Vegas Classic. "These girls don't quit," said MaryLou. "Christian had a hat made for them that says, '#catchusifyoucan.' We may not always win the game, but we gain a lot of respect."

According to MaryLou, over the past 10 years, an estimated 30 LHES athletes (many who played for the Club) have received scholarships to play sports at universities across the nation, from Pacific Lutheran University in Washington to Doane University in Nebraska. *MKCF is proud to offer ongoing help to this program that changes these players' lives on and off the court.*



Hail to the Worms

Resident gardeners Caroline Gold and Rita Benecke show off garden boxes brimming with vegetables and herbs after just one year of their Vegetable Gardening and Composting for Health programs, with help from MKCF... and some little red worms.

Hale Kupuna residence for seniors has offered an innovative gardening program for residents the past year. With initial support of MKCF, seniors purchased wood and hardware enough for two raised bed boxes.

When the original hearty group of four residents branched out and encouraged their Hale Kapuna neighbors in the 23-unit complex to compost and discover the value of vermiculture -- MKCF was there again to fund special red worms, which when added to compost create healthy microbiomes to enhance the soil. The gardeners' goal of a self-sustaining garden requires a composting area on-site. Vermiculture is an age-old practice where worms are gathered and fed to promote reproduction for composting with added focus on the collection of worm waste.



The health benefits of nurturing flourishing gardens are enormous and include physical movement, nutrition, and the mental stimulation that comes from learning about the art and science of gardening and composting. All of this from \$654 in support MKCF is privileged to provide so the residents Hale Kupuna can garden, compost, and build more boxes this year!

Thank you video from the summer 2021 STEAM program at the Lāna'i Youth Center funded by MKCF.



<https://www.youtube.com/watch?v=Ux1EeMeUOD4>

Manele Koele Charitable Fund is excited to be a part of the development of the Lana'i community and we thank our donors for support in any and all amounts. Donate at <https://www.manelekoele.org/>.

Gifts of All Sizes are Important & Impactful
Thank you for considering a donation today.

Consider choosing MKCF to benefit from your Amazon Smile shopping.

